

ALDERSHOT & DISTRICT
TRACTION CO LTD

are the only Company authorised by the Traffic Commissioners to run Football Excursions from Aldershot, Farnham, Farnborough and Camberley to away matches of the Aldershot Football Club

Owing to the restrictions in fuel supplies the Company regret that they can no longer operate Excursions to away matches, until the restriction of fuel supplies ends

ALDERSHOT FOOTBALL CLUB LTD.

1956-7

★ **Official Programme** ★

3D

Number 12. SATURDAY, DECEMBER 15th, 1956

Don't miss . . .

CHARLES BUCHAN'S
FOOTBALL
MONTHLY

The world's greatest soccer magazine. Packed with pictures and exciting articles by star players

*Ask the paper-shop
for **YOUR** copy
without delay.*

**SURREY &
HANTS NEWS**

First with the News
of Home and Away matches

Inside news and views of
Aldershot F.C.

Widest coverage of all local
sport

Every Thursday 3d.

PLACE YOUR ORDER WITH YOUR NEWSAGENT

SPORTS NEWS IS GOOD NEWS if it's in

ALDERSHOT
THE NEWS
AND MILITARY GAZETTE. FARNBOROUGH CHRONICLE AND FLEET TIMES

For the best match reports and comments about your club

*Complete coverage
and views of all
local news and sport*

*The family paper
that has everything
you want to know*

ASK YOUR NEWSAGENT TO DELIVER A COPY EVERY FRIDAY
or by post (4½d.) from the Wellington Press, Aldershot

HOME COUNTIES DAIRIES LIMITED

(POULSONS DAIRIES)

Members of the Safety



First Milk Association

HOME or AWAY !
YOU'LL FEEL A LOT BETTER !
IF YOU DRINK MORE MILK !

Branches throughout London and the Home Counties

Local Branches:

27 WELLINGTON STREET

Aldershot 15

39 FARNBOROUGH RD.

Farnborough 219

FARNBOROUGH DAIRY
SANDHILLS

Farnborough 396

Colours :
RED AND BLUE SHIRTS, WHITE KNICKERS

Ground and Offices :
RECREATION GROUND, ALDERSHOT

ALDERSHOT FOOTBALL CLUB LTD.

DIRECTORS :

F. POULTER, Esq.

G. H. COOPER, Esq.

D. LLEWELLYN GRIFFITHS, Esq., O.B.E.

J. A. B. JAYE, Esq. T. H. DAY, Esq.

S. C. SALTER, Esq. J. C. ARCHER, Esq.

A. V. BARRACLOUGH, Esq.

Secretary/Manager:

H. EVANS.

Phone : 2

ALDERSHOT 11

CLUB NEWS AND VIEWS

Good Afternoon, Ladies and Gentlemen.—

To-day's visitors being Swindon Town, the Wiltshire Club, we give them a hearty welcome. Whatever the status of our visitors in the League, they always give us a good game, and as often as not take away a point with them. In ten seasons since the war we have only beaten them three times on this ground, twice they have taken maximum points and five times the matches have been left drawn. Our away record on the Swindon ground is even worse, until this season we had not beaten them during the same period. We hope the team will put extra effort into improving our record to-day. Since 1946-47 the figures are :

	P.	W.	D.	L.	For.	Ag.	Pts.
Home	10	3	5	2	13	8	11
Away	11	1	2	8	9	27	4

Last season the result of both home and away games was a 1-1 draw. In our first game this season, played at Swindon, we won by 2-1.

Manager's Comments.—I will start my notes this week by thanking SPECTATOR for the advice he gave me in the last issue of the *Aldershot News*, in telling me what is wrong with the team. Although I always listen to advice from anybody, I should like it to come from someone who sees all the matches. SPECTATOR has seen us play one of five matches recently so can hardly be in a position to criticize, in fact, if anybody should be criticized it should be this person for not taking interest in us when we go away. It is true that we want a personality to draw the crowds, but first of all, we have to be sure he is the right person. So many thousands of pounds have been thrown away like this. To bring a few to mind, WATFORD, CRYSTAL PALACE, NORWICH, SUNDERLAND—(the latter have spent £314,000 since 1946), and remember I have seen a few lesser-known players come here, get their accrued share of benefit and vanish. It would have been better if SPECTATOR had made reference to the team-building for the future. We have now in our first team some fine young players for the future :—Clive Jackman (20), Ron Mann (21), Michael Gough (20), Lou Costello (19). To me this is progress and I am sure Aldershot has

never had such promising young players in its first team. Perhaps some of you older Supporters can inform me if we ever have !

Bobby Gilchrist will be leaving us on the 29th December, 1956, to return to his native Scotland. Bobby has no quarrel with us, but as he has just had an increase in the family he wishes to return to his own flat in Scotland. I for one am sorry to see this fine player go and I think once he returns to left full-back he will go places.

Brian Mitten is also leaving us ; he is now demobbed and has returned to his home in Bury as his wife does not wish to move South.

Congratulations once again to the Combination team on beating Southend by 5 goals to 1. For the benefit of Supporters who did not see the game the team was : Jackman ; Jackson, Mann ; Lacey, Richardson, Wetton ; Golding (N.), Menzies, Henry, Gough and Tyrer. Scorers : Gough 2, Menzies 2, Henry 1.

Once again our thanks go out to "ALLEN'S" Men's Wear, of Camp Road, Farnborough, for a gift of 2 dozen pairs of Shorts for use by the team. It is a pity that Mr. Allen cannot get to see the team more than about twice a season. Wish we could find a few more good friends like him.

HARRY EVANS.

Can You Beat It ?—We congratulate Mr. Wilfred Hawkins, of 64 Kingsway, Woking, who last week completed twenty-four years as a regular Supporter of the Club.

SUPPORTERS' CLUB NOTES.

The collection in aid of the Hungarian Relief Fund amounted to £34/7/7, and to those who contributed may I just say "Thank You."

It was hoped to arrange a match between the

NEXT HOME MATCH

ALDERSHOT v.

SWINDON

(FOOTBALL COMBINATION)

SATURDAY, DECEMBER 22nd

KICK-OFF 3 P.M.

Solomon Bros. Ltd.

HOUSE AND CAMP FURNISHERS

Marquees, Awnings and Tents for Hire
 Repairing, Re-Polishing & Re-Upholstering
 of Furniture . . . Removals and Storage

HIGH ST. & VICTORIA RD., ALDERSHOT
 TELEPHONE 333/4

Gifts

in WOOD, CHROME and BRASS-
 WARE. COSTUME JEWELLERY.
 FANCY STATIONERY and all the
 leading FOUNTAIN PENS.

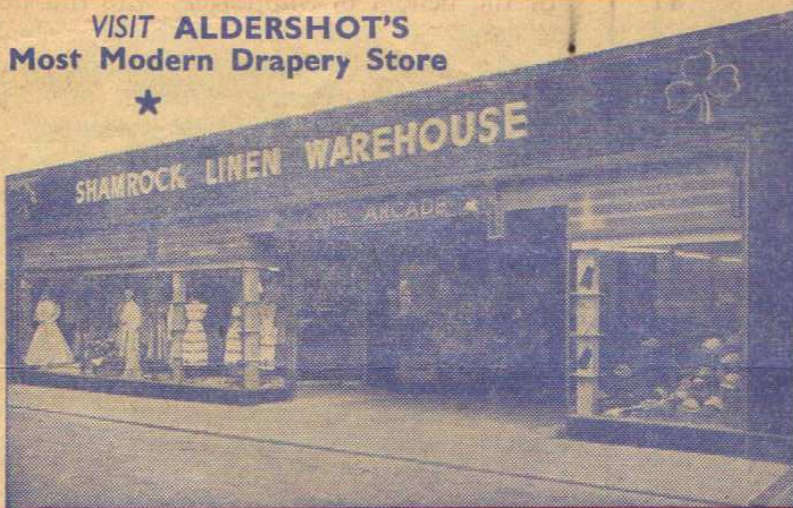
TOGETHER WITH HELPFUL SERVICE

You are always welcome at

EATONS

2, 3 and 4 THE ARCADE, ALDERSHOT

VISIT ALDERSHOT'S
 Most Modern Drapery Store



SPARKS ELECTRICAL CO.
 ENGINEERS & CONTRACTORS

Installations



Repairs

Telephone: 158

134 VICTORIA ROAD, ALDERSHOT

*3-DAY SERVICE

FREE Estimates, Collection and Delivery
 Repairs and Adaptations

WE HOLD THE LARGEST STOCK
 VIEW WITHIN

FARNHAM CARPETS
 WEST STREET, FARNHAM

ALDERSHOT v. SWINDON

Right]

ALDERSHOT

2 GILCHRIST

4 ALISON

7 GAYNOR J.

8 GAYNOR L.

JAC

5 R

9 M.

Referee:

H. L. BROADHURST
 (Atherstone, Warwick)

11 DARCY

10 EDWARDS

9 C

6 PEMBERY

5

3 EARL

Left]

CHA

SW

Auto Accessories

IS THE
 FOR ALL MODERN DO-

We invite you to inspect, without obligation,
 aids to good motoring on display in the
 We welcome your enquiries — and
 "THE MOTORIST'S SHOP." Personal
 to satisfy every customer is our aim.

AUTO ACCESSORIES, C
 157 LONDON ROAD

CARPET CLEANING

ivery. All Carpets Mothproofed
Carpets and Lino laid.
CKS OF CARPETS IN SURREY
T OBLIGATION

ET (Cleaning) CO.
AM Telephones 4433-4

(Red and Blue) [Left

MAN
3 MANN
DIE 6 NEAVE
STELLO 10 GOUGH 11 FLINT

Linesmen:

R. J. PIKE (Red Flag)
L. S. COOK (Yellow Flag)

KICK-OFF 3 P.M

VEN 8 GIBBS 7 RICHARDS
CK 4 CROSS
2 HUNT

DLER
NDON [Right

ies, Camberley CENTRE

T-YOURSELF MOTORISTS

tion, the widest range of Accessories and
district, with all prices clearly marked.
you can save money by visiting
ttention—speedy service and the desire
Enthusiasts can obtain speed equipment
om

AMBERLEY (Phone 2525)
(A30), CAMBERLEY

Calling all Workers

GET ORGANISED . . . if you want to win!

How often have you tendered this advice to your team?
DO YOU believe in the wisdom of your own advice?

HAVE YOU GOT ORGANISED YET AT YOUR WORKS?
(enquiries are treated in the strictest confidence)

THE TRANSPORT & GENERAL WORKERS' UNION

— TEAMWORK ENSURES RESULTS —

DISTRICT OFFICE:
67 GROSVENOR ROAD — ALDERSHOT 1686

K. J. APTHORPE & CO.

Incorporated Auctioneers & Estate Agents

MORTGAGES ARRANGED ON ALL TYPES OF PROPERTY
ALSO RE-MORTGAGING FACILITIES
VALUATIONS FOR PROBATE. RENTS COLLECTED

61 VICTORIA ROAD, ALDERSHOT
Phone 240

Timbercraft

FOR THE BEST

GREENHOUSES, GARDEN SHEDS, GARAGES, POULTRY
APPLIANCES, ETC.

TIMBER, PLYWOOD, HARDBOARD, 'HARDEC' PLASTIC
all cut to size for you

BUILT-IN CUPBOARDS & WARDROBES ARE OUR SPECIALITY

Open from 7 a.m. till 5.30 p.m. Monday to Friday. 7 a.m. to 12 noon Saturday

RING 690 AND WE WILL SEE TO THE REST

'TIMBERCRAFT' WOOD PRODUCTS (Regd.)
EAST STATION ROAD & ST. GEORGE'S ROAD, ALDERSHOT
Phone 690

ALWAYS A GOOD RESULT *if you*

TRUST ARCHER'S

THE MOTOR SPECIALISTS

VICTORIA ROAD, ALDERSHOT

Phone: 323

FOR ALL YOUR MOTORING REQUIREMENTS & SERVICE

CARS:
AUSTIN, MORRIS,
ROVER

—AGENTS— MOTOR CYCLES:
Ariel, Matchless, Norton, Triumph
Velocette, James, Norman, Ambassador
Bown Zundapp and Panther

"local" Hungarians and the Supporters' Club to further boost the funds, but this idea had to be abandoned due to circumstances beyond our control.

In case you are asking "What about our own needy folk?" Well, we haven't forgotten them either, and donations from the Club have been sent to the leading organizations in Aldershot and Farnborough, who do such a grand job of work for the old and needy at this season.

The Free Christmas Draw, organized by the Club for the benefit of its members, which was to have been held next Wednesday, had to be brought forward and took place last Thursday, when over 120 prizes were distributed.

There is just a possibility of some of the Supporters' Club appearing on T.V. Early in the New Year the B.B.C. are holding a Knock-out Competition on the lines of a Quiz. Teams of six from selected Supporters' Clubs will be on the platform, while the body of the hall will be filled by their Supporters, suitably arrayed and armed with bells, rattles, etc., to give encouragement. Should be good. First round is on January 11th, I believe.

A Happy Christmas and a Prosperous New Year to You All.

TICKER.

SCHOOLS' FIXTURE.

Special Attraction. Boys' County Match (Floodlit).—By kind permission of the Directors, Aldershot F.C., the Schools' Inter-Counties Cup Match, Hampshire v. Surrey, will be played at the Recreation Ground, Aldershot, on Wednesday evening, 19th December, under floodlights, K.O. 7.15 p.m. This match should produce a high standard of football by boys who are the choice of their counties. These matches are forty minutes each way and the boys are under fifteen years of age at the beginning of the season.

LEAGUE TABLES

FOOTBALL LEAGUE—DIVISION III (SOUTH)

(For Matches played up to and including Saturday, 8th December, 1956)

	HOME						AWAY					
	P.	W.	D.	L.	F.	A.	W.	D.	L.	F.	A.	Pts.
Southampton	21	9	2	0	23	5	4	3	3	14	12	31
Torquay U.	21	7	3	0	33	14	3	4	4	8	20	27
Newport Co.	21	8	3	0	22	6	0	6	4	7	12	25
Colchester U.	21	8	3	0	29	10	2	2	6	13	17	25
Shrewsbury T.	21	5	5	0	14	4	2	5	4	11	25	24
Brentford	21	6	3	2	29	20	3	2	5	12	15	23
Watford	21	6	1	3	21	15	4	2	5	16	17	23
Bournemouth	21	5	5	0	24	9	2	3	6	12	17	22
Brighton & H.	21	6	3	1	24	12	2	3	6	18	20	22
Reading	21	7	2	2	20	11	2	2	6	16	22	22
Northampton	21	8	2	0	24	5	0	3	8	10	21	21
Ipswich Town	21	7	2	1	26	8	2	1	8	12	22	21
Queen's Pk. R.	21	7	2	1	18	6	1	3	7	6	21	21
Millwall	21	5	3	2	17	14	3	2	6	12	23	21
Gillingham	21	6	2	3	20	15	1	4	5	10	22	20
Crystal Palace	21	2	6	3	12	15	2	5	3	16	19	19
Coventry City	22	6	3	3	22	14	0	4	6	6	25	19
Southend Utd.	21	6	3	2	19	9	0	3	7	14	27	18
Aldershot	21	5	2	3	20	18	2	2	7	17	28	18
Norwich City	21	5	3	3	16	13	0	5	5	10	20	18
Exeter City	21	3	4	4	15	12	2	3	5	11	18	17
Walsall	22	4	4	2	15	9	1	3	8	10	24	17
Swindon Town	21	4	1	6	21	24	3	1	6	13	27	16
Plymouth Arg.	21	2	5	3	11	16	3	1	7	10	21	16

THE FOOTBALL COMBINATION

Table of Results including 8th December, 1956.

	P.	W.	D.	L.	F.	A.	Pts.
Tottenham Hotspur	19	15	2	2	81	28	32
Bournemouth & Bos.	21	13	5	3	57	31	31
West Ham United	20	12	5	3	37	19	29
Arsenal	21	11	6	4	57	32	28
Leicester City	19	12	3	4	51	32	27
Chelsea	18	12	2	4	48	25	26
Bristol Rovers	19	10	4	5	48	22	24
Leyton Orient	18	11	2	5	53	29	24
Southampton	22	8	8	6	51	52	24
Luton Town	17	10	2	5	46	21	22
Bristol City	19	7	7	5	34	30	21
Crystal Palace	16	8	4	4	28	21	20
Aldershot	19	8	3	8	42	50	19
Birmingham City	18	7	4	7	29	25	18
Millwall	18	7	4	7	30	31	18
Charlton Athletic	17	9	0	8	34	39	18
Portsmouth	20	7	3	10	35	45	17
Plymouth Argyle	20	7	3	10	36	52	17
Brighton & Hove Alb.	18	6	5	7	33	49	17
Ipswich Town	19	4	8	7	36	43	16
Cardiff City	19	7	1	11	37	44	15
Reading	18	6	3	9	35	44	15
Swindon Town	18	6	3	9	27	41	15
Northampton Town	18	5	5	8	32	53	15
Brentford	16	5	3	8	21	29	13
Queen's Park Rangers	18	5	3	10	32	47	13
Southend United	19	5	3	11	27	46	13
Norwich City	18	4	3	11	21	31	11
Watford	19	3	5	11	22	42	11
Coventry City	18	3	4	11	33	50	10
Fulham	18	2	5	11	19	37	9
Swansea Town	19	2	4	13	22	54	8

HALF TIME SCORE BOARD

A BOURNEMOUTH SOUTHAMPTON	F PLYMOUTH ARGYLE BRENTFORD	M WATFORD GILLINGHAM
B CRYSTAL PALACE NORWICH CITY	G QUEENS PARK R. READING	N CHARLTON ATH. ASTON VILLA
C EXETER CITY COVENTRY CITY	H SHREWSBURY TOWN BRIGHTON & HOVE	P CHELSEA BURNLEY
D IPSWICH TOWN TORQUAY UNITED	K SOUTHEND COLCHESTER U.	R PORTSMOUTH NEWCASTLE U.
E NORTHAMPTON T. NEWPORT COUNTY	L WALSALL MILLWALL	S TOTTENHAM H. PRESTON N.E.

FLOWERS for Any Occasion

DELIVERED ANYWHERE BY INTER-FLORA

A Buttonhole to a Bouquet of Choice Cut Flowers

BADHAMS LTD.

THE CORNER HOUSE

Upper Union Street, Aldershot
Telephone 642 (2 lines)

QUALITY—is our Watchword

COME TO ..

BURROWS

for your Cakes and Pastries

72 Grosvenor Rd. & 152 Victoria Rd.
ALDERSHOT

LESLIE E. BILES LTD.

47 Union St., ALDERSHOT

OFFICIAL DISTRIBUTORS
OF SMITH'S WATCHES
AND CLOCKS

Personal Payments Arranged



FOOTBALL COMBINATION

			For	Agst.
Aug.	18	BRIGHTON .. H	2	2
	23	SWANSEA Town A	2	1
	25	SWINDON Town A	2	5
	29	SWANSEA Town H	2	0
Sept.	1	ARSENAL .. H	1	3
	8	WATFORD .. H	4	2
	15	PORTSMOUTH A	1	7
	22	BOURNEMOUTH H	2	7
	29	IPSWICH Town A	3	2
Oct.	6	TOTTENHAM H. A	3	3
	13	SOUTHAMPTON H	1	1
	20	NORWICH CITY A	2	1
	27	FULHAM .. H	1	3
Nov.	3	QUEEN'S Park R. A	3	2
	10	CHARLTON Ath. H	2	4
	17	WEST HAM Utd. A	0	3
	24	NORTHAMPTON H	0	1
Dec.	1	CRYSTAL PAL. A	6	2
	8	SOUTHEND U. H	5	1
	15	BRIGHTON .. A		
	22	SWINDON Town H		
	25	READING .. H		
	26	READING .. A		
	29	ARSENAL .. A		
Jan.	5	BRISTOL Rovers H		
	12	WATFORD .. A		
	19	PORTSMOUTH H		
	26	BRISTOL Rovers A		
Feb.	2	BOURNEMOUTH A		
	9	IPSWICH Town H		
	16	TOTTENHAM H. H		
	23	SOUTHAMPTON A		
Mar.	2	NORWICH City H		
	9	FULHAM .. A		
	16	QUEEN'S Park R. H		
	23	CHARLTON Ath. A		
	30	WEST HAM U. H		
Apr.	6	NORTHAMPTON A		
	13	CRYSTAL Pal. H		
	19	CHELSEA .. A		
	20	SOUTHEND Utd. A		
	22	CHELSEA .. H		

Printing

JOHN DREW (PRINTERS) LTD. are producing printing of the highest standard at their Aldershot Works. This standard is not only the result of recent reorganization, improved equipment and a new wide range of type faces, but also of the painstaking care of craft-proud men and women at every stage of production. The finished result of our work is considered to be extremely good—good enough to make it really worth while consulting us for whatever your requirements in the field of print. Write, telephone or call, or ask our representative to call on you.

JOHN DREW (Printers) Ltd.

FREDERICK STREET, ALDERSHOT.

Telephone: ALDERSHOT 205

If it's

COAL, ANTHRACITE

or unrationed

COKE, COALITE, OVOIDS

5 Station Road, Aldershot 181

Station Approach, Farnborough 98

G. HINCHLIFFE & Co. Ltd.

COME TO

HINCHLIFFES

1st TEAM FIXTURES AND LEAGUE TABLE

		For		Agst.			For		Agst.
Aug.	18	SWINDON TOWN	A	2	1	Apr.	6	NORWICH CITY	H
	22	GILLINGHAM	H	0	0		13	COLCHESTER UNITED	A
	25	BRENTFORD	H	0	2		19	PLYMOUTH ARGYLE	H
	29	GILLINGHAM	A	2	6		20	CRYSTAL PALACE	H
Sept.	1	READING	A	1	2		22	PLYMOUTH ARGYLE	A
	5	MILLWALL	H	3	0		27	COVENTRY CITY	H
	8	WATFORD	A	0	3	May	2	NEWPORT COUNTY	A
	10	MILLWALL	A	5	1				
	15	SHREWSBURY TOWN	H	1	1				
	19	BRIGHTON	H	1	4				
	22	WALSALL	A	1	5				
	26	BRIGHTON	A	2	2				
	29	IPSWICH TOWN	H	3	1				
	6	QUEEN'S PARK RANGERS	H	4	2				
	13	NORTHAMPTON TOWN	A	2	4				
	20	SOUTHEND UNITED	H	5	3				
	27	CRYSTAL PALACE	A	1	2				
Nov	3	EXETER CITY	H	1	4				
	10	SOUTHAMPTON	A	0	1				
	24	NORWICH CITY	A	1	1				
Dec.	1	COLCHESTER UNITED	H	2	1				
	15	SWINDON TOWN	H						
	22	BRENTFORD	A						
	25	BOURNEMOUTH	A						
	26	BOURNEMOUTH	H						
	29	READING	H						
Jan.	5	TORQUAY UNITED	A						
	12	WATFORD	H						
	19	SHREWSBURY TOWN	A						
	26	TORQUAY UNITED	H						
Feb.	2	WALSALL	H						
	9	IPSWICH TOWN	A						
	16	QUEEN'S PARK RANGERS	A						
	23	NORTHAMPTON TOWN	H						
Mar.	2	SOUTHEND UNITED	A						
	9	NEWPORT COUNTY	H						
	16	EXETER CITY	A						
	23	SOUTHAMPTON	H						
	30	COVENTRY CITY	A						

REEVES' FISH CAFE

OPP. HIPPODROME

**AFTER THE MATCH
A WELCOME HAVEN**

**PERFECT FISH MEALS
ULTRA-MODERN HEATING
BY INFRA-RED**

BRENTFORD v. ALDERSHOT

Saturday, 22nd December

KICK-OFF 3.15 P.M.

EXCURSION TO BRENTFORD

Depart		FROM	Return Fare 2nd Class		BRENTFORD F.C. FOOTBALL GROUND IS WITHIN 7 MINUTES WALK OF BRENTFORD CENTRAL STATION
p.m.	p.m.		s.	d.	
12A24	12A54	ALTON	7	6	OBTAIN TICKETS IN ADVANCE AT STATIONS OR AGENCIES
12A30	1A00	BENTLEY	7	6	
12A37	1A07	FARNHAM	7	3	
12B52	1B24	ALDERSHOT	7	0	
12B57	1B29	ASH VALE	7	0	
Arrive		AT	Children 3 and under		IN THE EVENT OF THE MATCH BEING POSTPONED, THESE ARRANGEMENTS WILL NOT BE CARRIED OUT
p.m.	p.m.		14 Half Price		
2.23	2.53	BRENTFORD CENTRAL			

RETURN BY ANY TRAIN THE SAME DAY INCLUDING THE FOLLOWING:

BRENTFORD CENTRAL	dep. 5.20 p.m.	FARNHAM	arr. 7A 3 p.m.
ASH VALE	arr. 6B39 p.m.	BENTLEY	arr. 7A10 p.m.
ALDERSHOT	arr. 6B44 p.m.	ALTON	arr. 7A17 p.m.

"A"—Change at Aldershot, Staines and Whiston. "B"—Change at Staines and Whiston.

NOTICE AS TO CONDITIONS. These tickets are issued subject to the British Transport Commission's published Regulations and Conditions applicable to British Railways exhibited at their Stations or obtainable, free of charge, at Station Booking Offices

BRITISH RAILWAYS